



## ***Juno EHR: Enabling Profit Margin Successes for Rural Hospitals***

### **Cost-Effective, Flexible and Scalable EHR Provides a Better User Experience and Advances Remote Patient Monitoring Efforts**

**T**he ongoing COVID-19 pandemic has increased patient loads in many parts of the country. By hastening the transition to virtual care, it put enormous strain on the IT resources of rural hospitals, decimating operating margins.

And rural caregivers were struggling before the pandemic hit. A wide-range of hospitals serving rural areas have closed for a variety of reasons, including low patient volume, workforce shortages, budget cuts and a broader movement to outpatient care.

According to recent report by The Chartis Center for Rural Health, nearly half (46 percent) of rural hospitals have negative operating margins, and nearly 180 rural hospitals have closed since 2005. The study also found that 82 percent of the rural hospitals surveyed said the suspension of outpatient services – due to the COVID 19 pandemic – have resulted in a loss of at least \$5 million per month.



**46%**

of rural hospitals have negative operating margins



**180**

rural hospitals have closed since 2005



**82%**

of the rural hospitals surveyed said the suspension of outpatient services – due to the COVID 19 pandemic – have resulted in a loss of at least \$5 million per month.

Further compounding these issues is the challenge of upkeep and upgrades required to maintain their legacy EHR presences.

A 2020 Black Book survey found:



That almost

**60%**

of hospitals with fewer than 150 beds are re-assessing the effectiveness of their current EHR solutions.



More than

**25%**

of them are exploring whether a cloud-based EHR solution would better suit their needs.

However, new opportunities are emerging for rural care providers to embrace flexible, cost-effective and scalable EHR systems that also advance Remote Patient Monitoring (RPM) efforts.

## Enabling RPM for Democratizing Care

*Access to healthcare services is critical to overall community health, and yet rural residents face a variety of access barriers. Much of this comes down to rural residents who live in remote areas, and often must travel long distances to reach a health care provider.*

**According to Healthy People 2020, access to healthcare is important for:**

- Overall physical, social, and mental health status
- Disease prevention
- Detection, diagnosis, and treatment of illness
- Quality of life
- Avoiding preventable deaths
- Life expectancy

Thankfully, RPM allows patients to overcome access barriers at a low cost, helping to drive health equity in areas that have limited capabilities. RPM has been a key component of value-based strategies like hospital-at-home and in certain specialties like palliative care, as well as managing patients with chronic diseases.

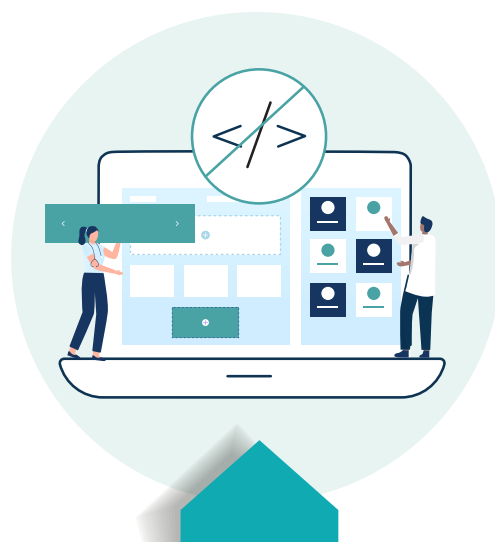
## No IT Department Needed: A Flexible EHR Customizable by Providers

Designed with true flexibility in mind, Juno EHR is low code/no code development solution specifically tailored for rural health. Low code/no code is the term for application development environment that is primarily visual and uses a simple graphical interface, as opposed to technical coding.

With this in mind, Juno EHR offers an easy-to-use interface for creating customized notes and workflows – for better accessing and sharing critical patient information. It allows providers to drag and drop notes to reflect the most important patient information at a glance, and allows for different configurations by specialty.

- Providers, nurses and clinicians can do all this with no need for internal IT departments or ongoing vendor development.

Juno EHR's cloud-based infrastructure also eliminates the demand for large in-house IT staffs and data storage, allowing rural hospitals to securely outsource that heavy lifting. Juno EHR offers the advanced functions, features and innovation that can improve care and the bottom line.



**You can simply create a theme, and arrange the data anyway you want to synch with your unique workflows. In addition, providers can also create their own screens – an EHR within an EHR – for enhancing overall workflows.**



## Easy Scalability to Meet All Patient Needs

The flexibility provided by Juno EHR allows rural hospitals to easily scale into specialty care arenas.

For example, if a rural hospital is more focused on maternity, Juno EHR can be completely customized and scaled only for this specialty area.

EHR scalability also allows hospital systems and processes to be further optimized to meet expanding care needs by keeping a consistent process and workflow throughout the whole organization.

## Juno EHR: Designed with the Provider in Mind

Thoughtfully designed with physicians and providers in mind, Juno EHR re-imagines what's possible for better provider and patient well-being.

With new RPM capabilities being developed right now, we are always looking to the future in our journey to reimagining the EHR. Every day we are working to redefine the EHR, elevating what exists today and unlocking new potential to build a smarter, flexible, and more cost-effective solution.



### Juno EHR is Powered by Juno Health

Backed by more than 30 years of proven success, Juno Health is transforming modern healthcare technology by taking a more human approach to make the patient experience less of a journey. We think like providers because we listen to them first. Our digital healthcare solutions are powered by our people, and our people empower you.